



ipa
INNOVATIONS FOR
POVERTY ACTION

Impact of the Graduation Approach: Findings from the CGAP- Ford Graduation Pilots

Nathanael Goldberg

Jeremy Shapiro

April 2016

Why Evaluate?

What is the **impact** of the Graduation model on the ultra poor?

Impact evaluation measures:

- How have the lives of clients changed **compared to how they would have changed in the absence of the program**
- Note this is **different** from “How have their lives changed”





**ABDUL LATIF JAMEEL
Poverty Action Lab**
TRANSLATING RESEARCH INTO ACTION

Seven-Country Replication



★ Honduras

★ Peru

★ Ghana

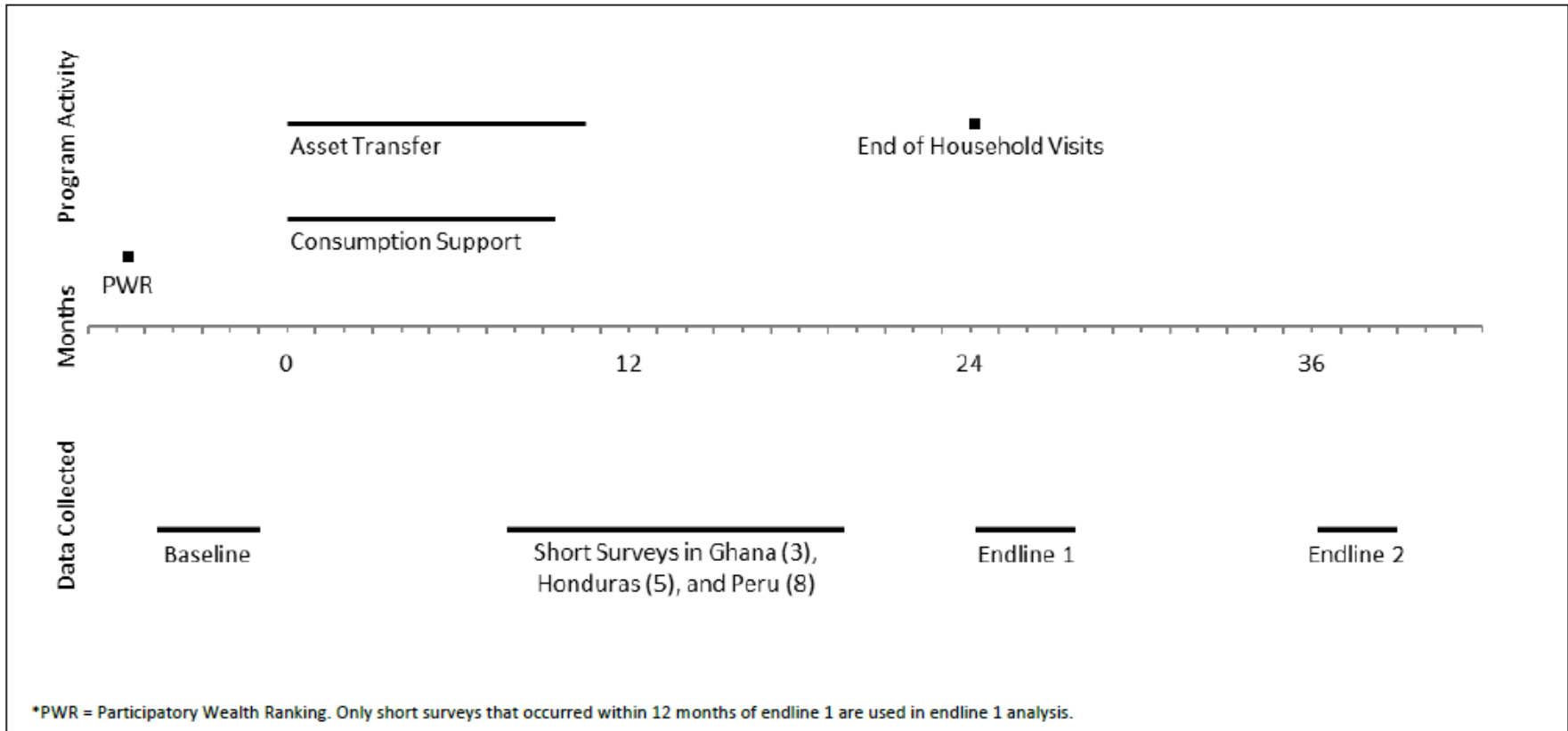
★ Ethiopia

★ Yemen

★ Pakistan

★ India

Cross-Site Timeline



Cross-Site Analysis

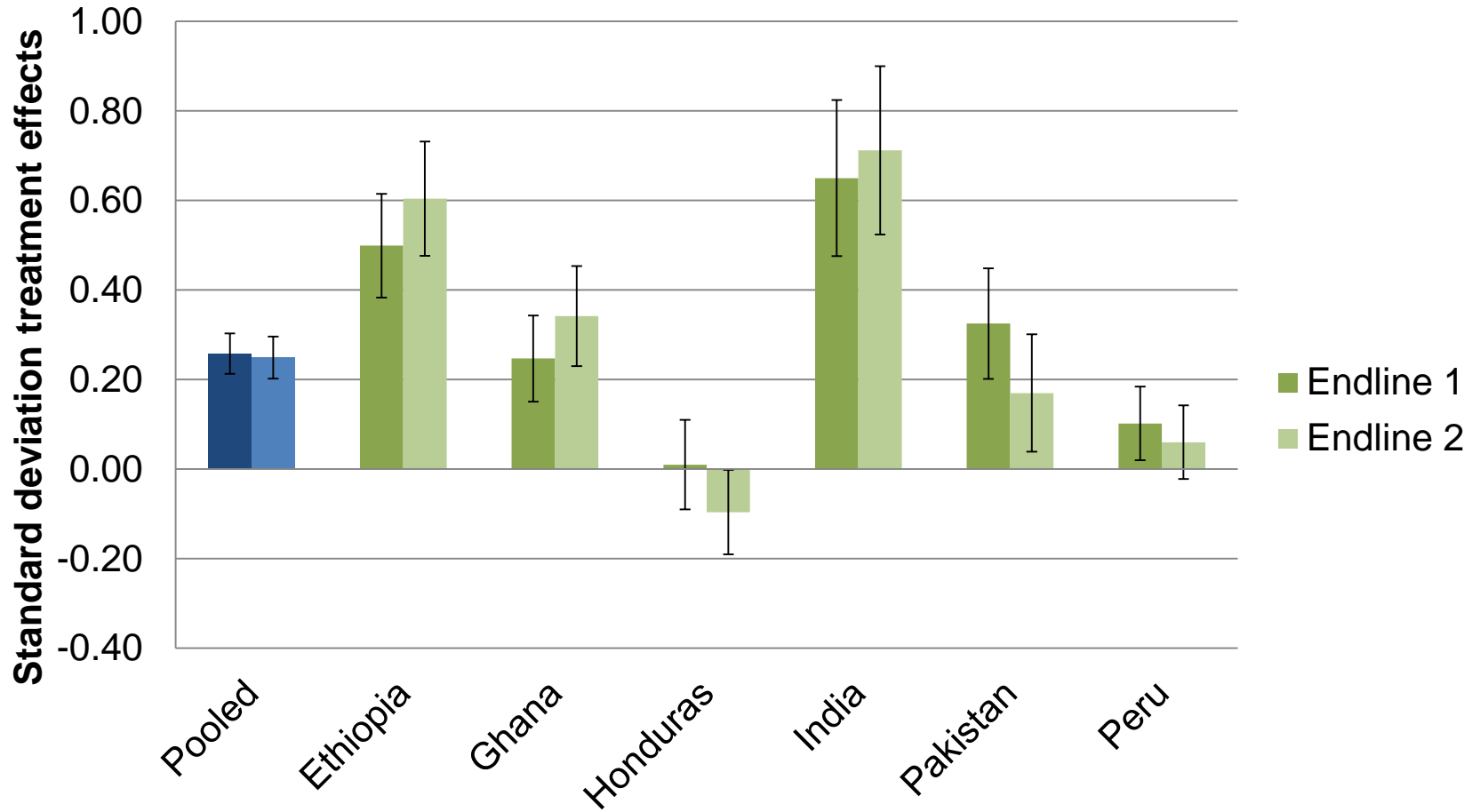


Asset Index



ABDUL LATIF JAMEEL
Poverty Action Lab

TRANSLATING RESEARCH INTO ACTION

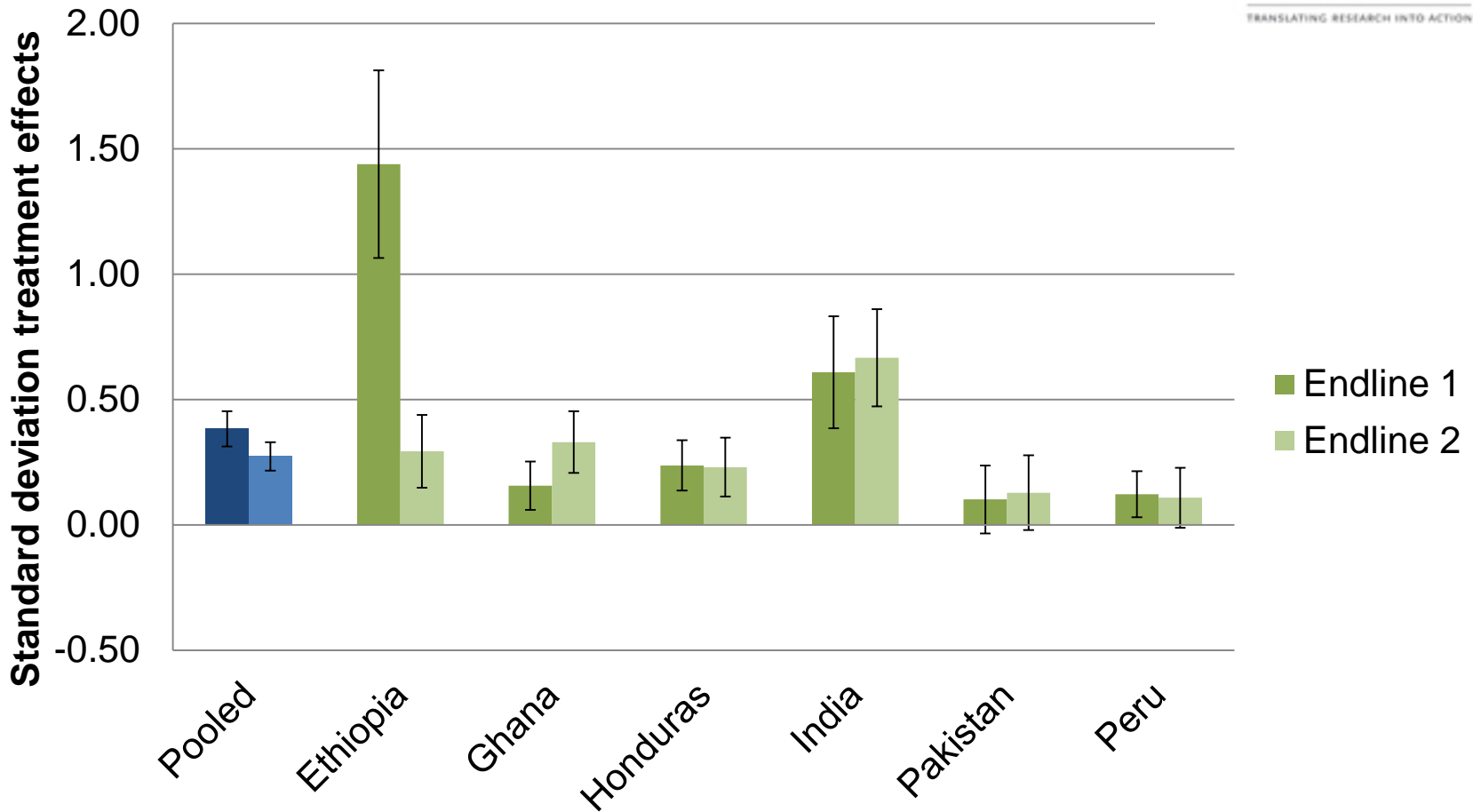


Total asset value

Pooled endline 1: \$599 (control mean \$2619)

Pooled endline 2: \$533 (control mean \$2300)

Income and Revenues

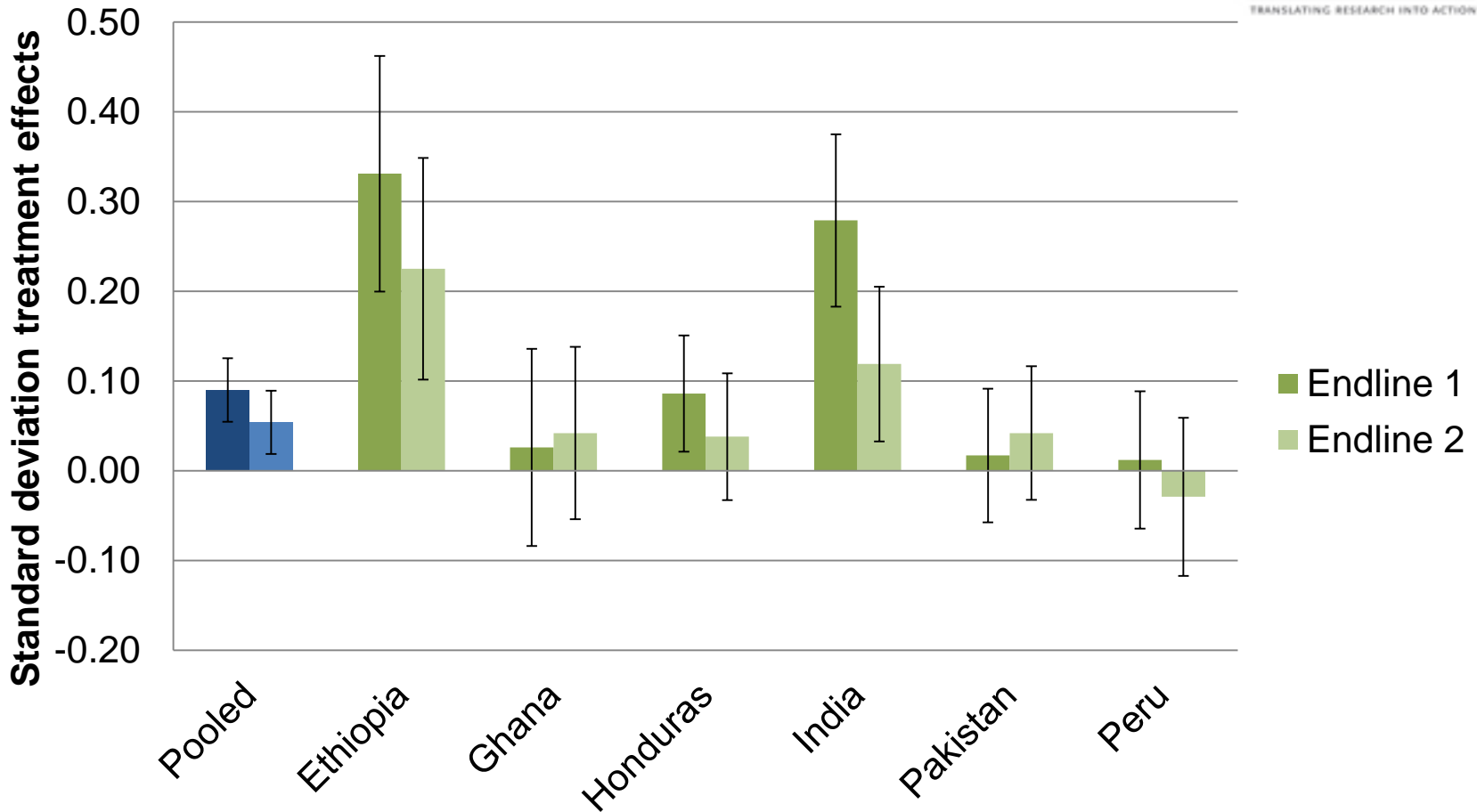


Monthly livestock revenues

Pooled endline 1: \$85.81 (control mean \$73.52)

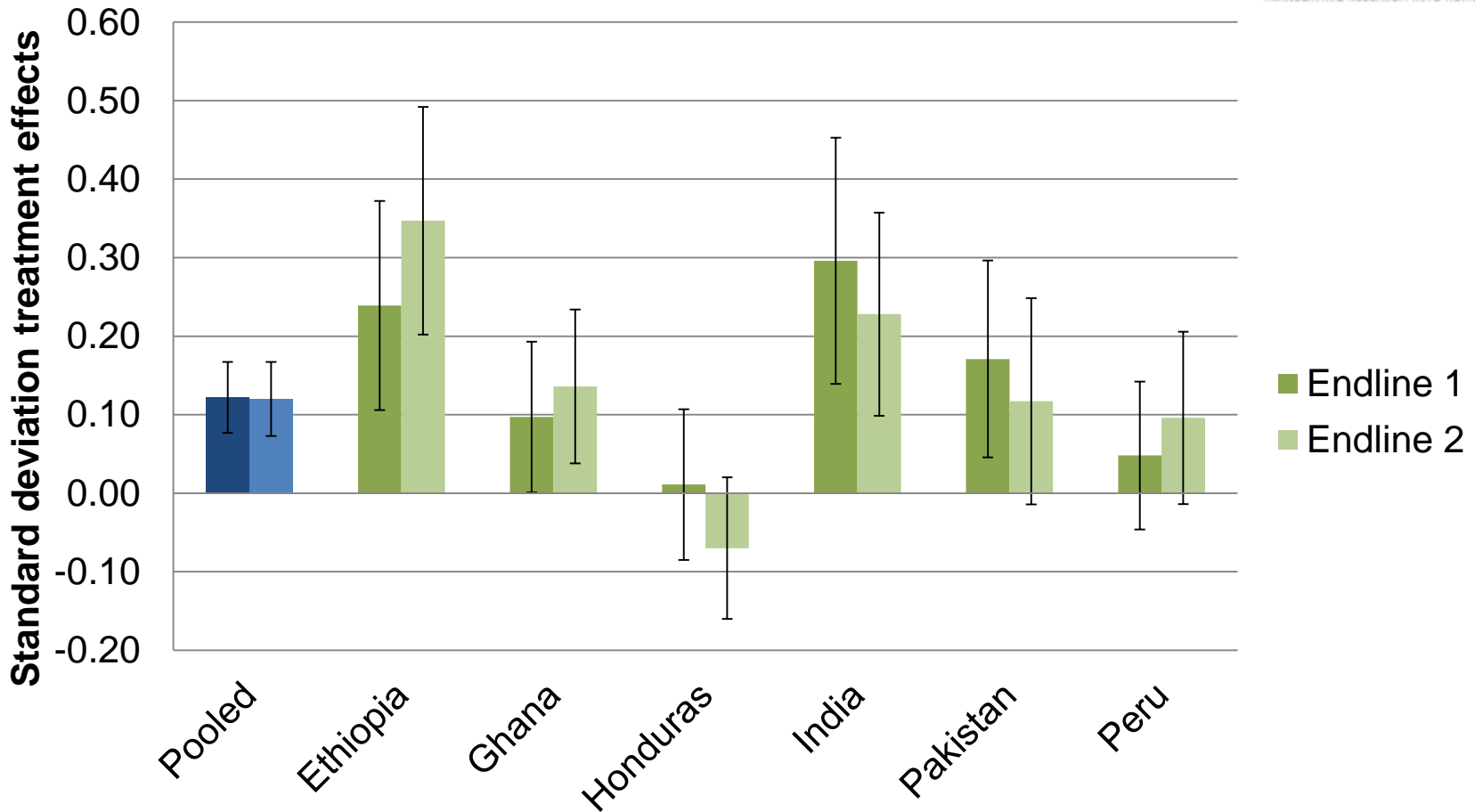
Pooled endline 2: \$55.50 (control mean \$80.62)

Time Use



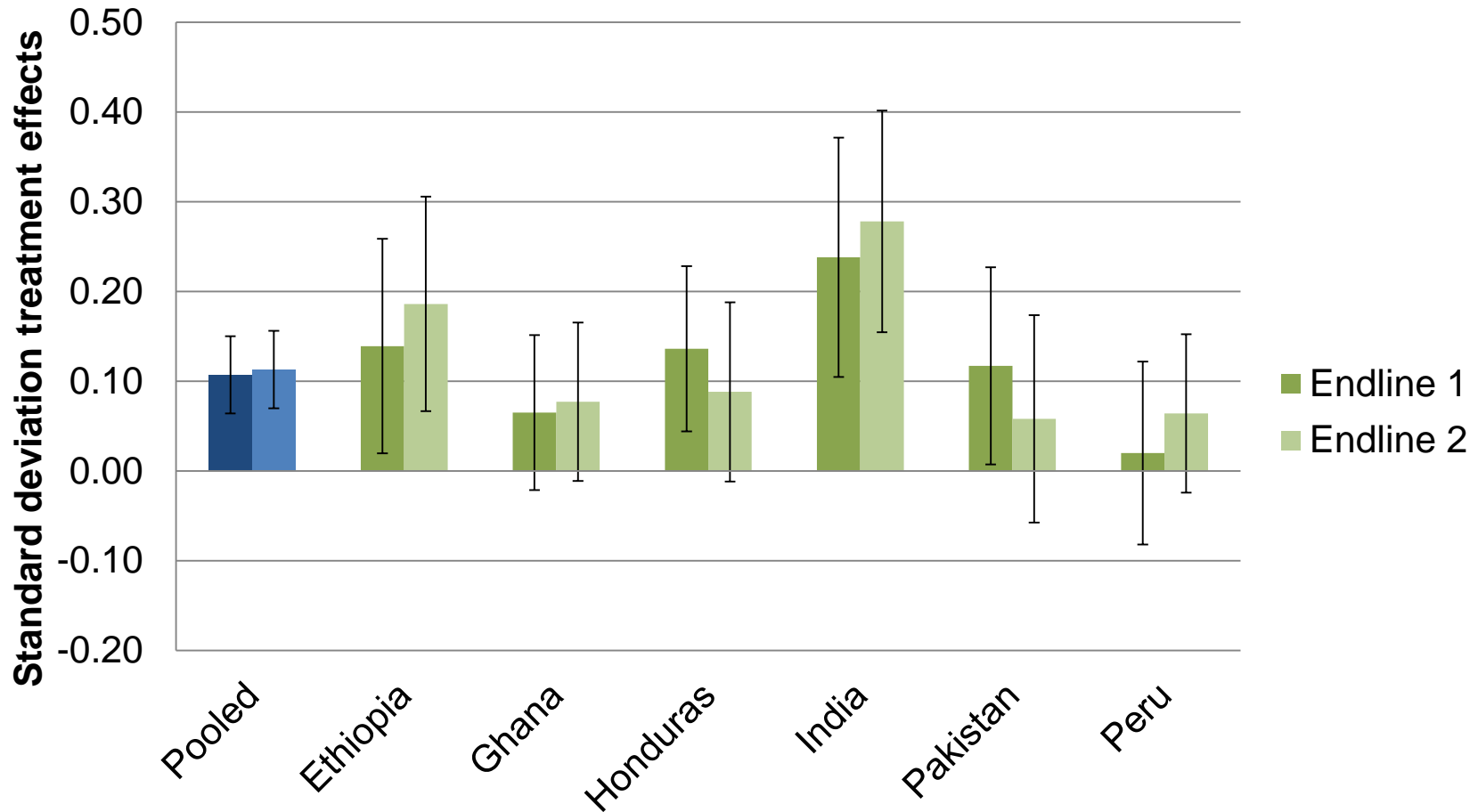
Minutes spent on productive activities
Pooled endline 1: 17.5 (control mean 169)
Pooled endline 2: 11.2 (control mean 185)

Per Capita Consumption



Per capita consumption, month
Pooled endline 1: \$4.55 (control mean \$78.80)
Pooled endline 2: \$3.36 (control mean \$68.80)

Food Security



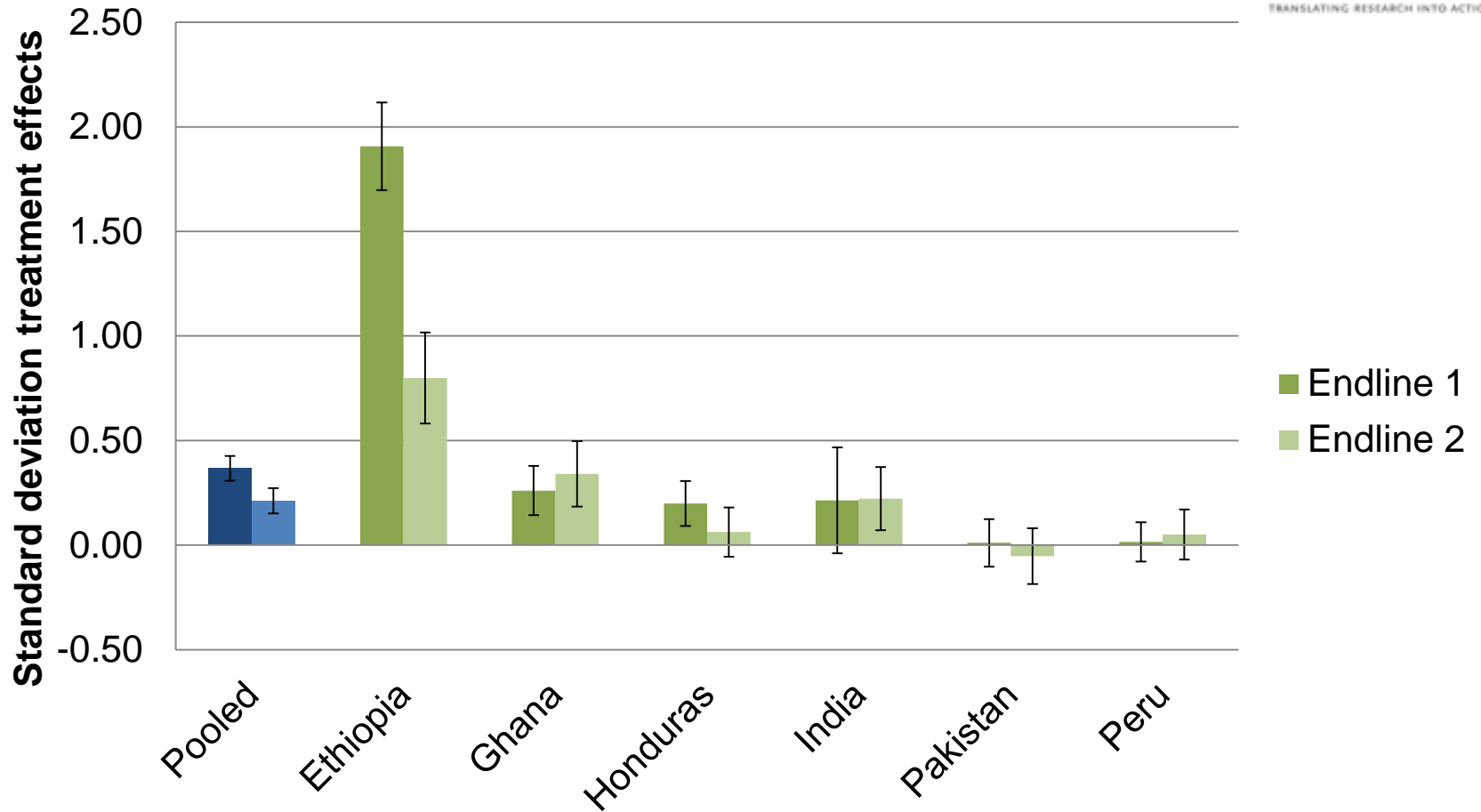
Everyone gets enough to eat each day
Pooled endline 1: treatment 47%, control 42%
Pooled endline 2: treatment 45%, control 40%

Financial Inclusion



ABDUL LATIF JAMEEL
Poverty Action Lab

TRANSLATING RESEARCH INTO ACTION

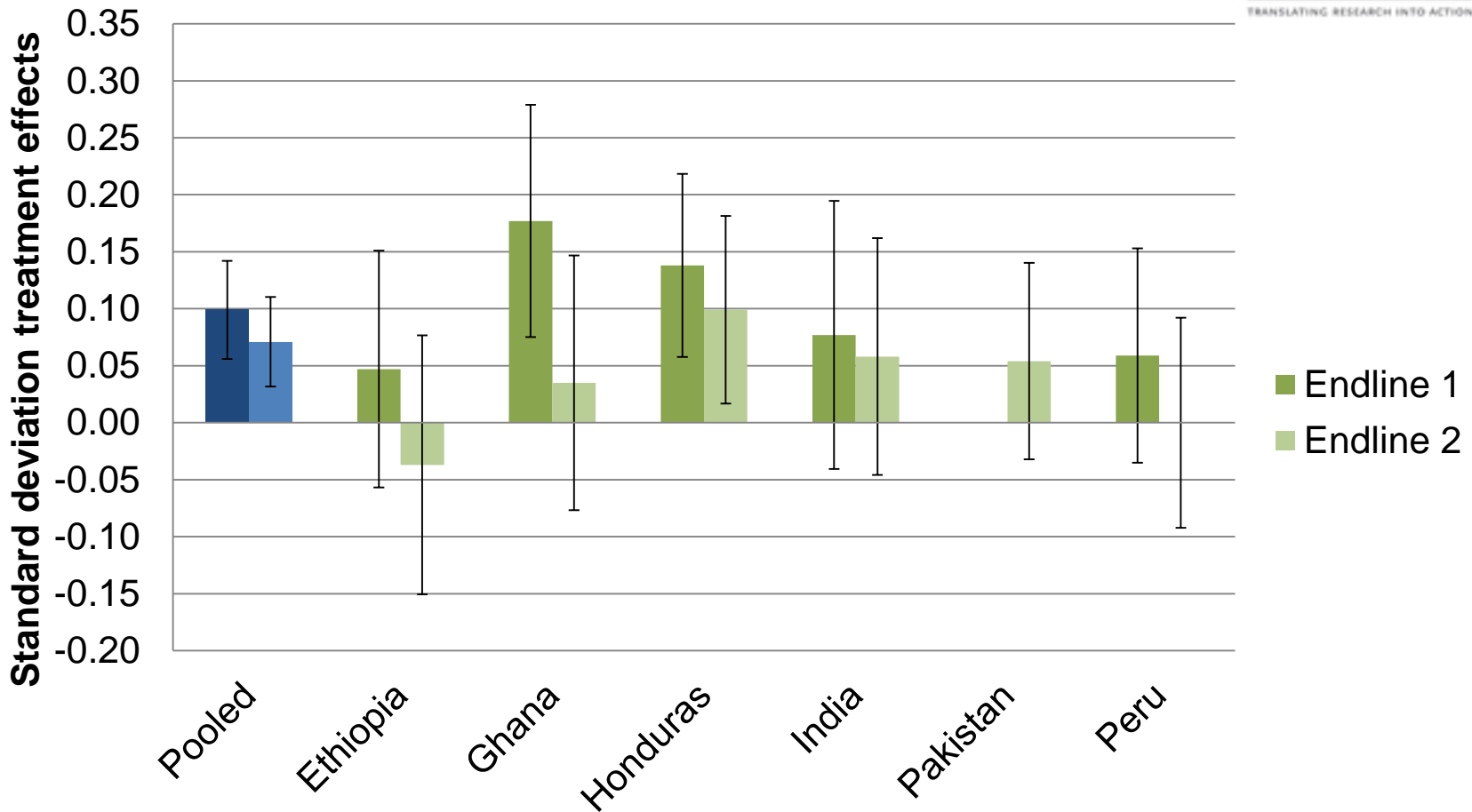


Total savings balance

Pooled endline 1: \$159.41 (control mean \$97.07)

Pooled endline 2: \$58.38 (control mean \$78.38)

Mental Health



Self-reported life satisfaction (1-5 scale)

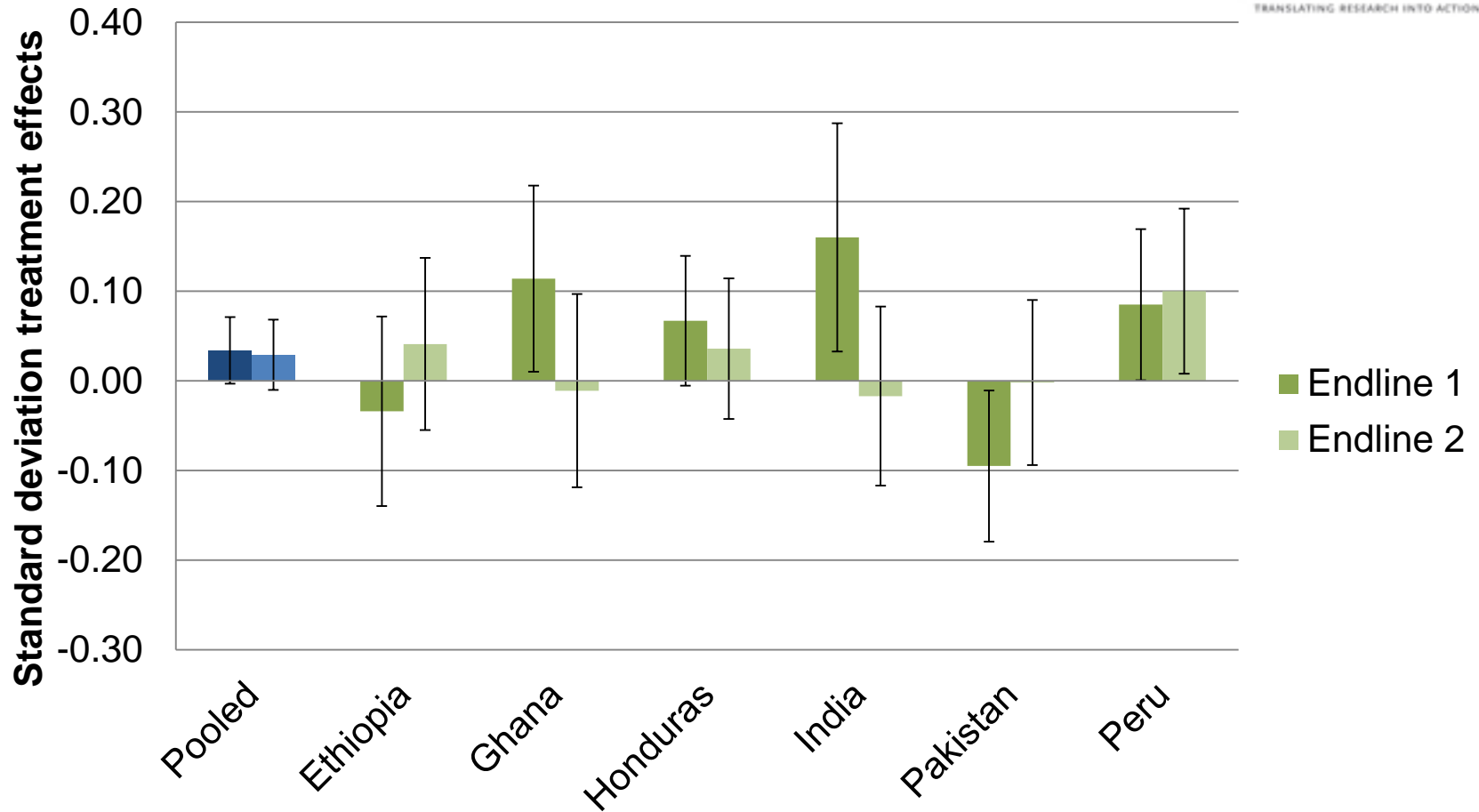
Pooled endline 1: 0.11 points (control mean 2.99)

Pooled endline 2: 0.08 points (control mean 3.13)

Physical Health



ABDUL LATIF JAMEEL
Poverty Action Lab
TRANSLATING RESEARCH INTO ACTION



Activities of daily living index

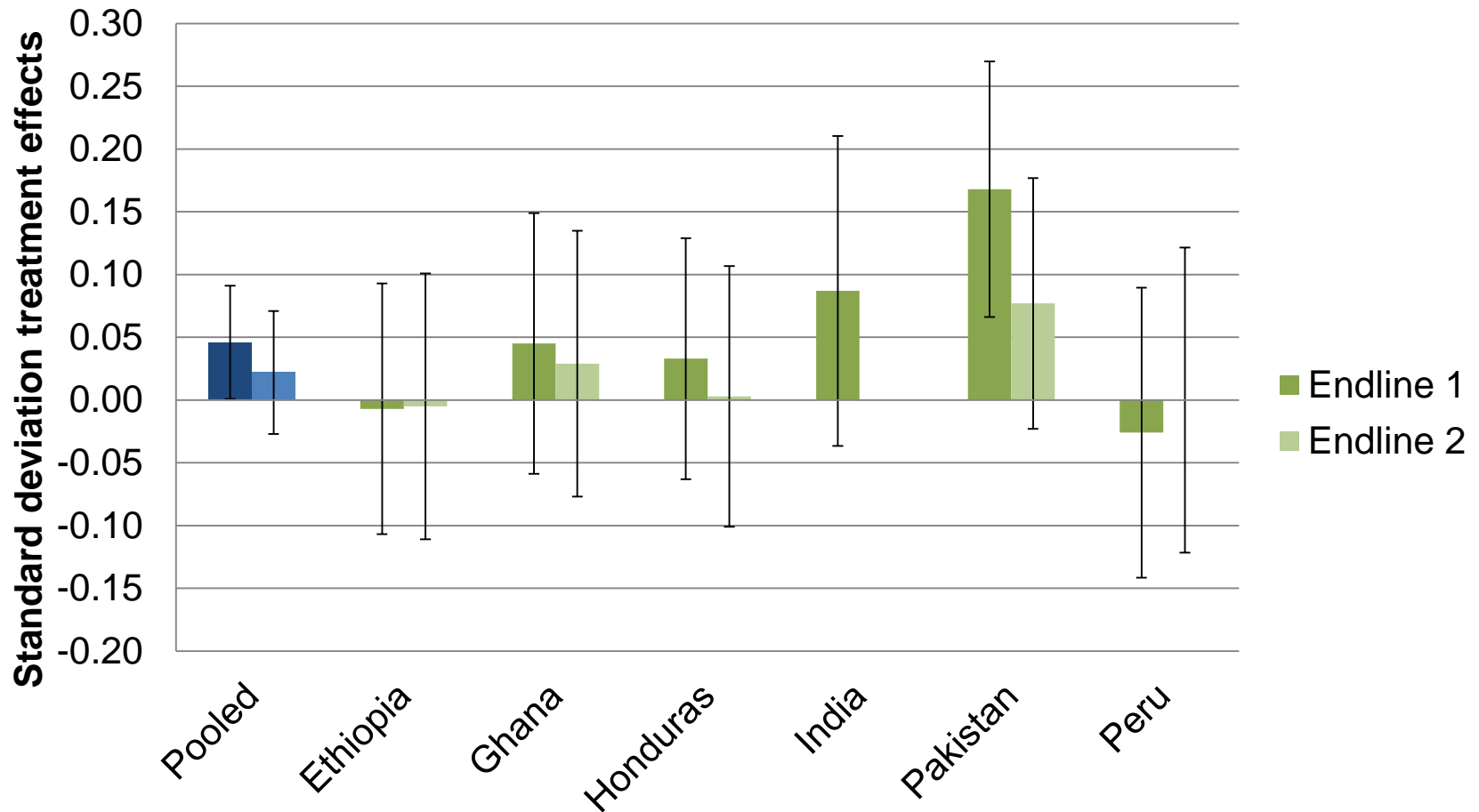
Pooled endline 1: treatment 83%, control 82%

Pooled endline 2: treatment 81%, control 80%

Women's Empowerment



ABDUL LATIF JAMEEL
Poverty Action Lab
TRANSLATING RESEARCH INTO ACTION

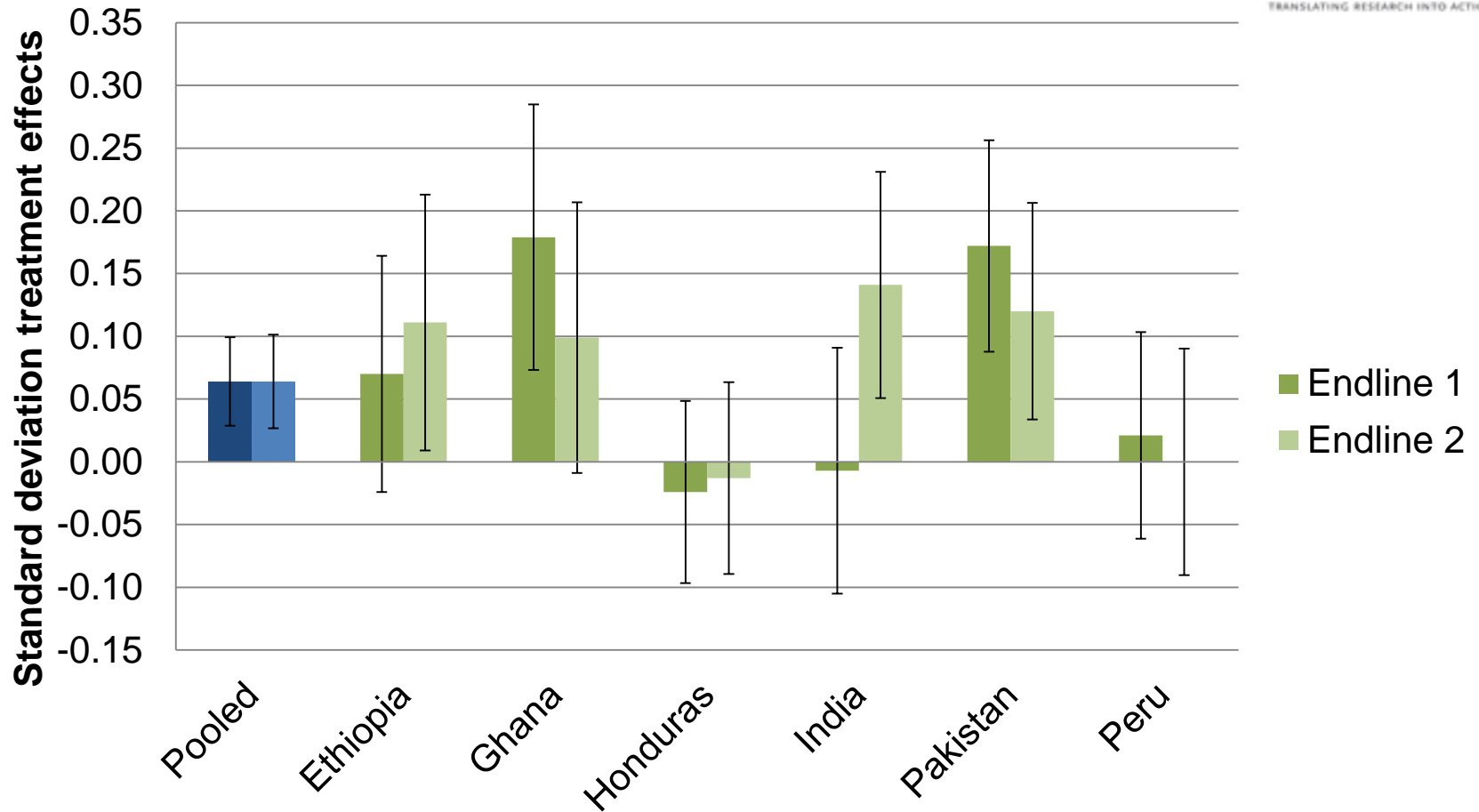


Female major decision-maker, food decisions
Pooled endline 1: treatment 57%, control 55%
Pooled endline 2: treatment 64%, control 63%

Political Involvement



ABDUL LATIF JAMEEL
Poverty Action Lab
TRANSLATING RESEARCH INTO ACTION



Member has attended village meeting, last year
Pooled endline 1: treatment 45%, control 42%
Pooled endline 2: treatment 39%, control 36%

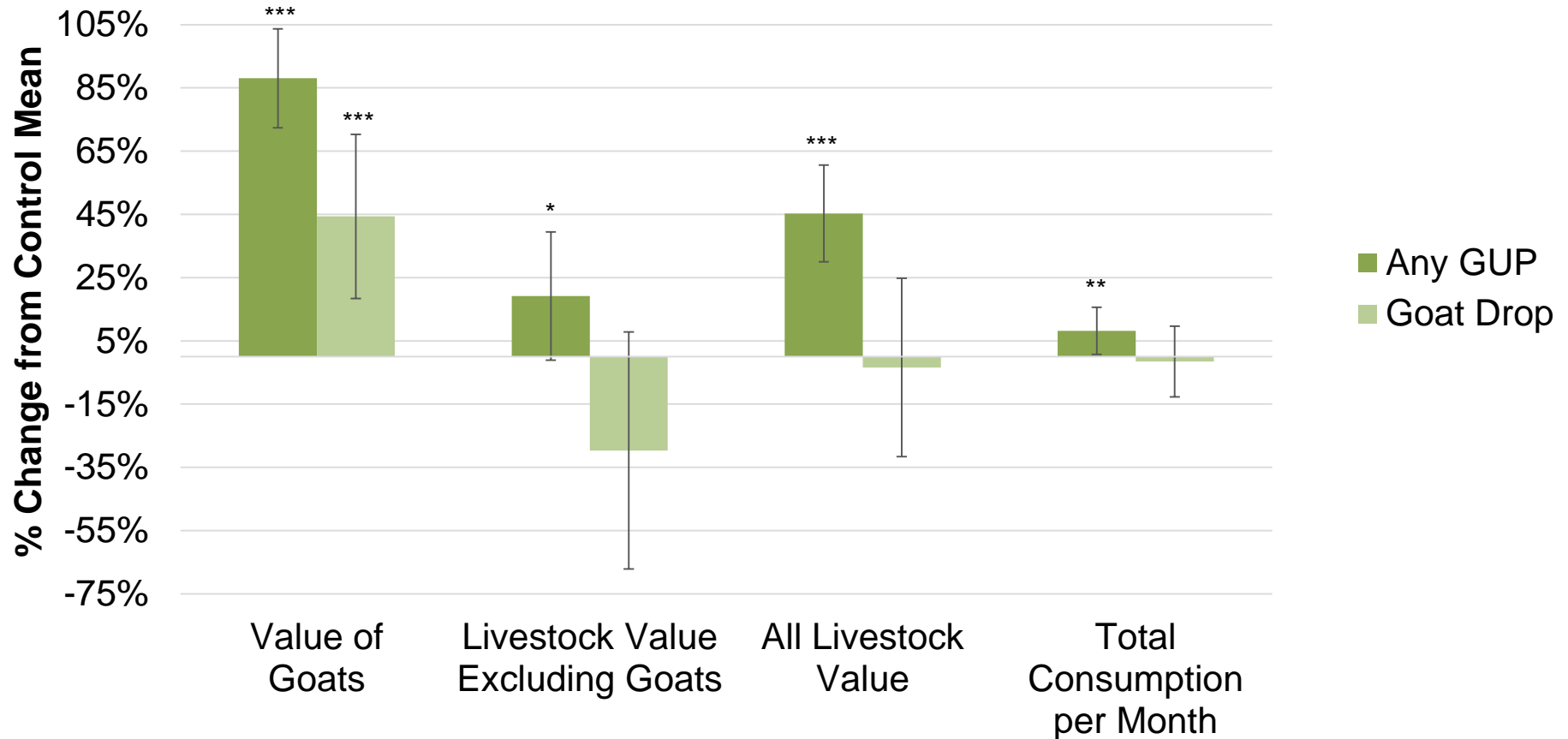
Are assets all that matter?



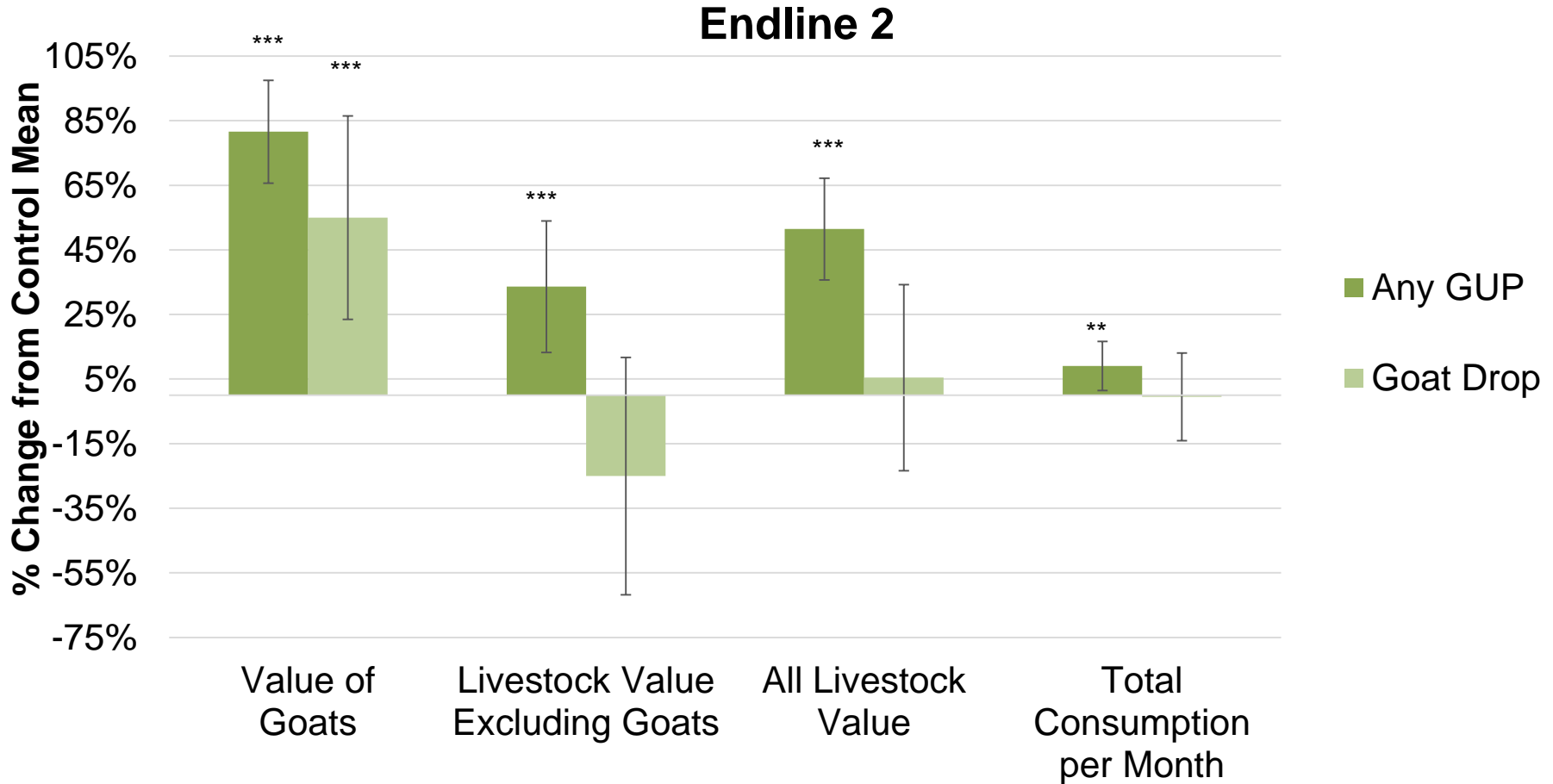
Graduation vs. Goats, endline 1



Endline 1



Graduation vs. Goats, endline 2

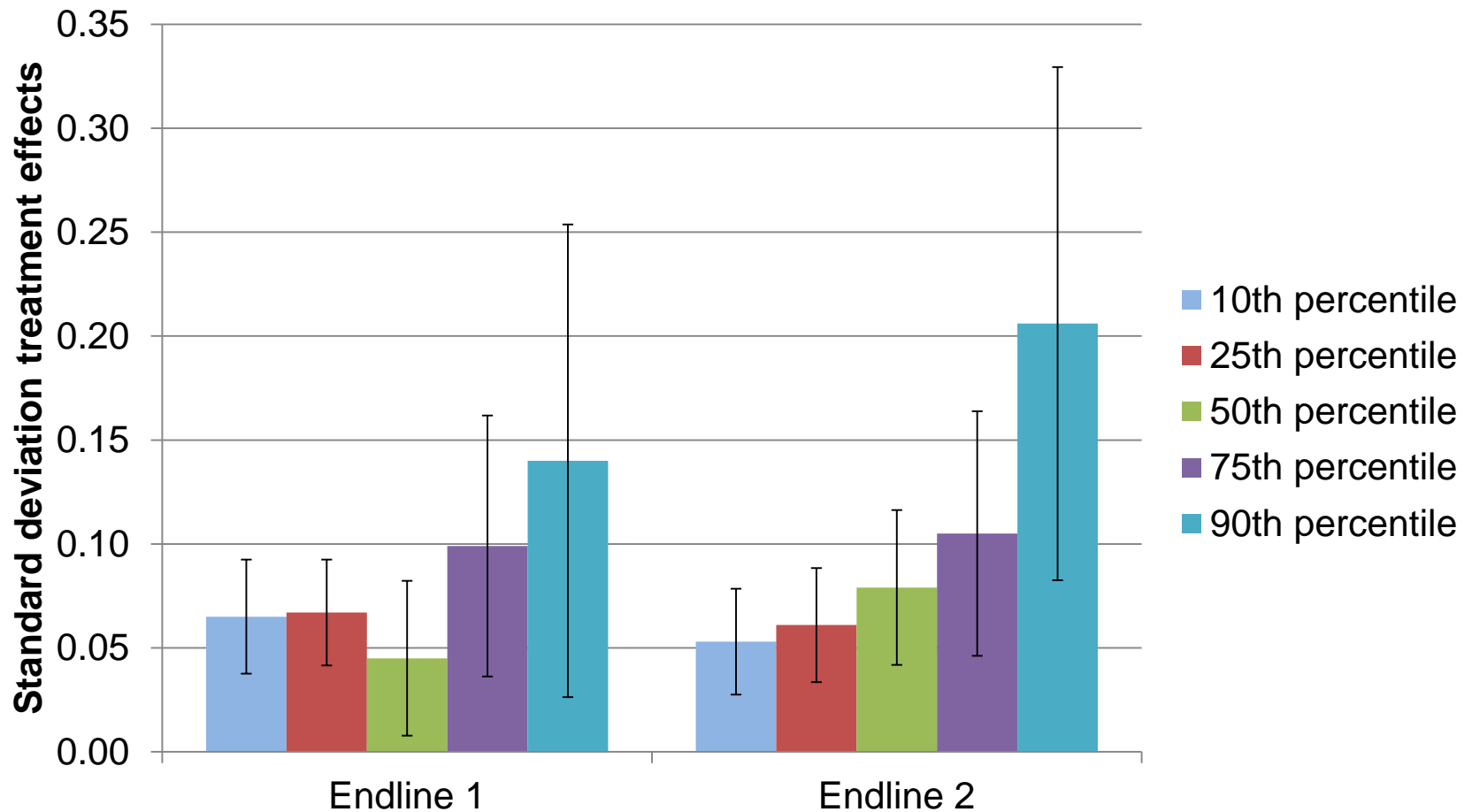


Who benefits from graduation?



- Everybody benefits
- Some more than others

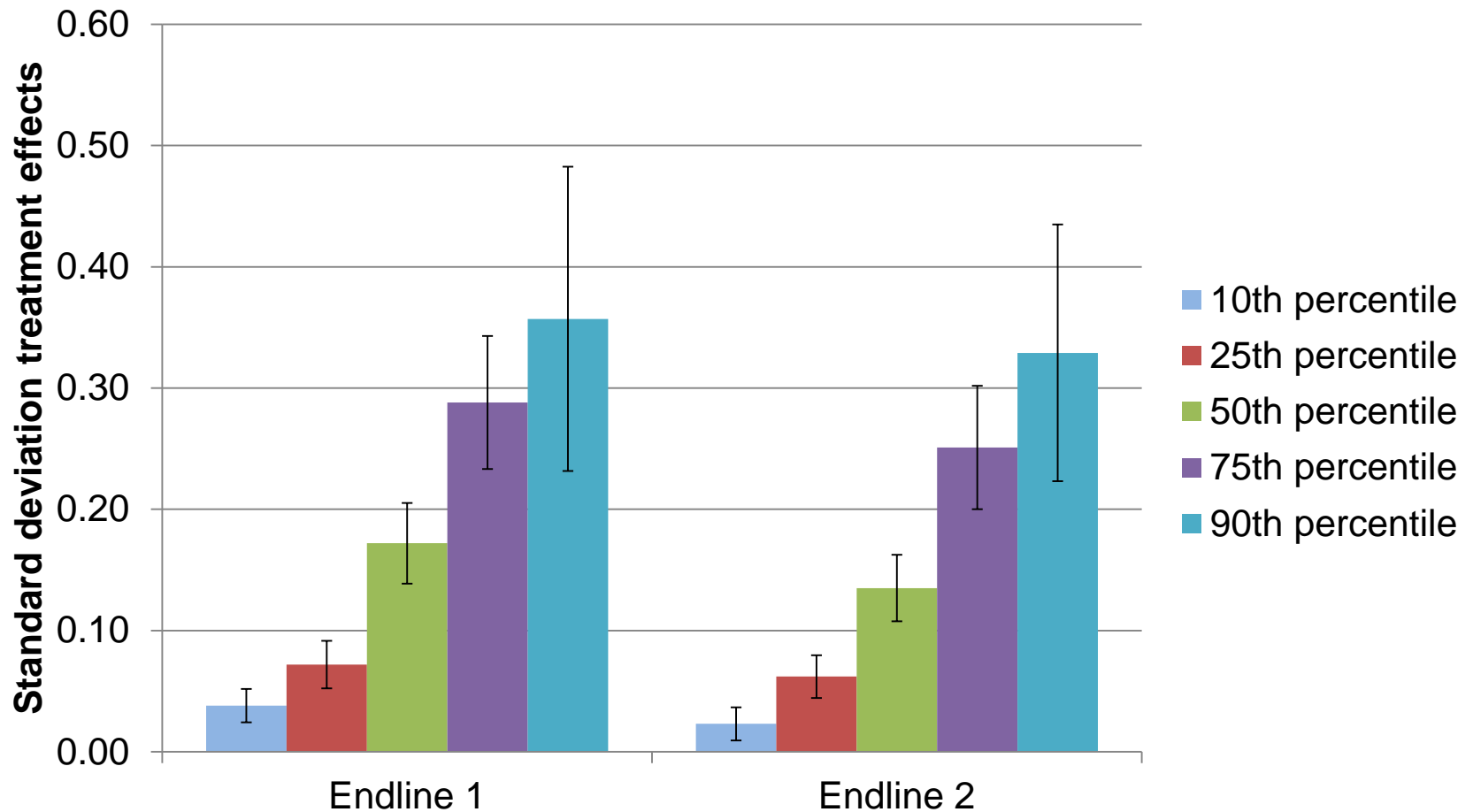
Quantile results: Consumption



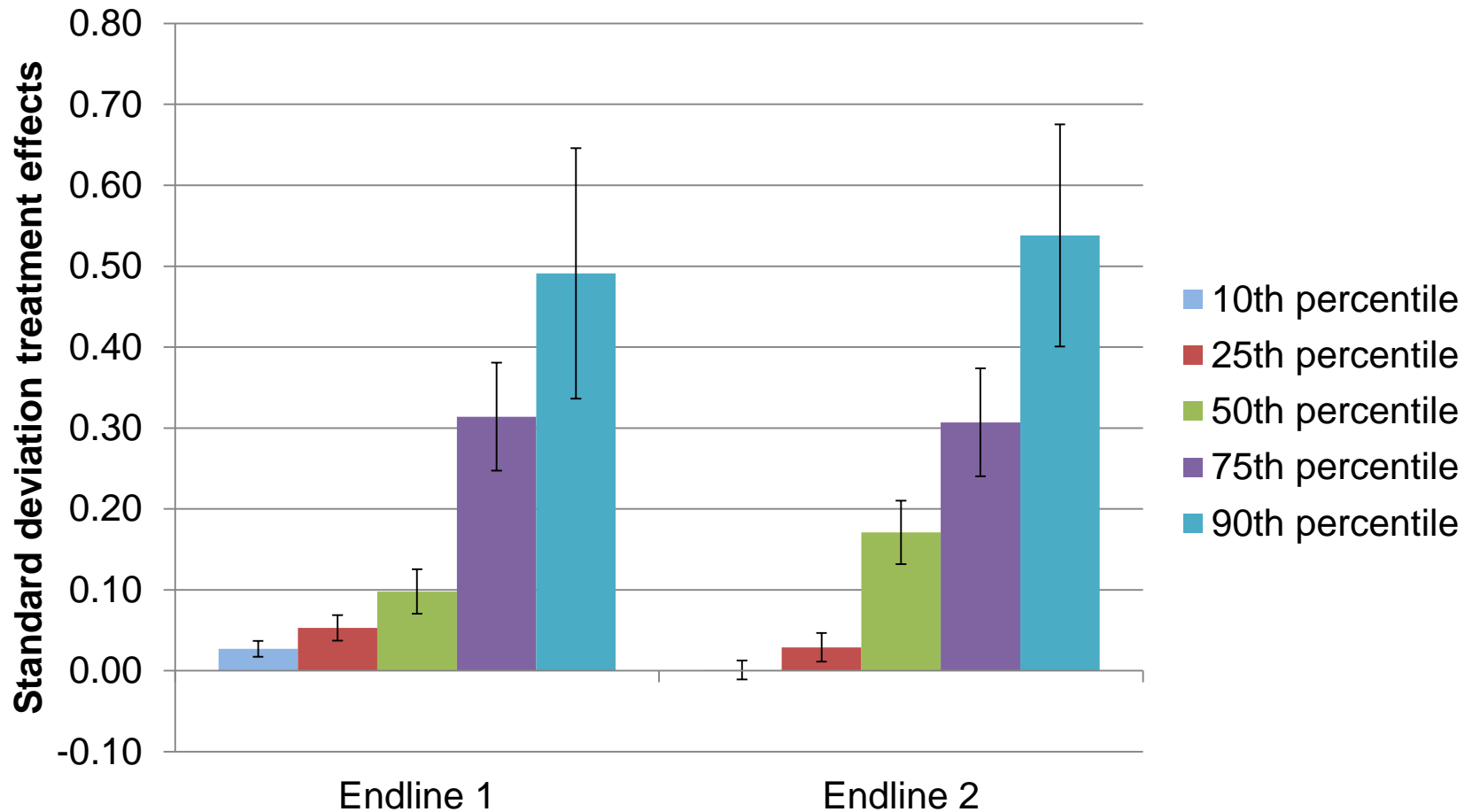
Quantiles: Asset Ownership



ABDUL LATIF JAMEEL
Poverty Action Lab
TRANSLATING RESEARCH INTO ACTION

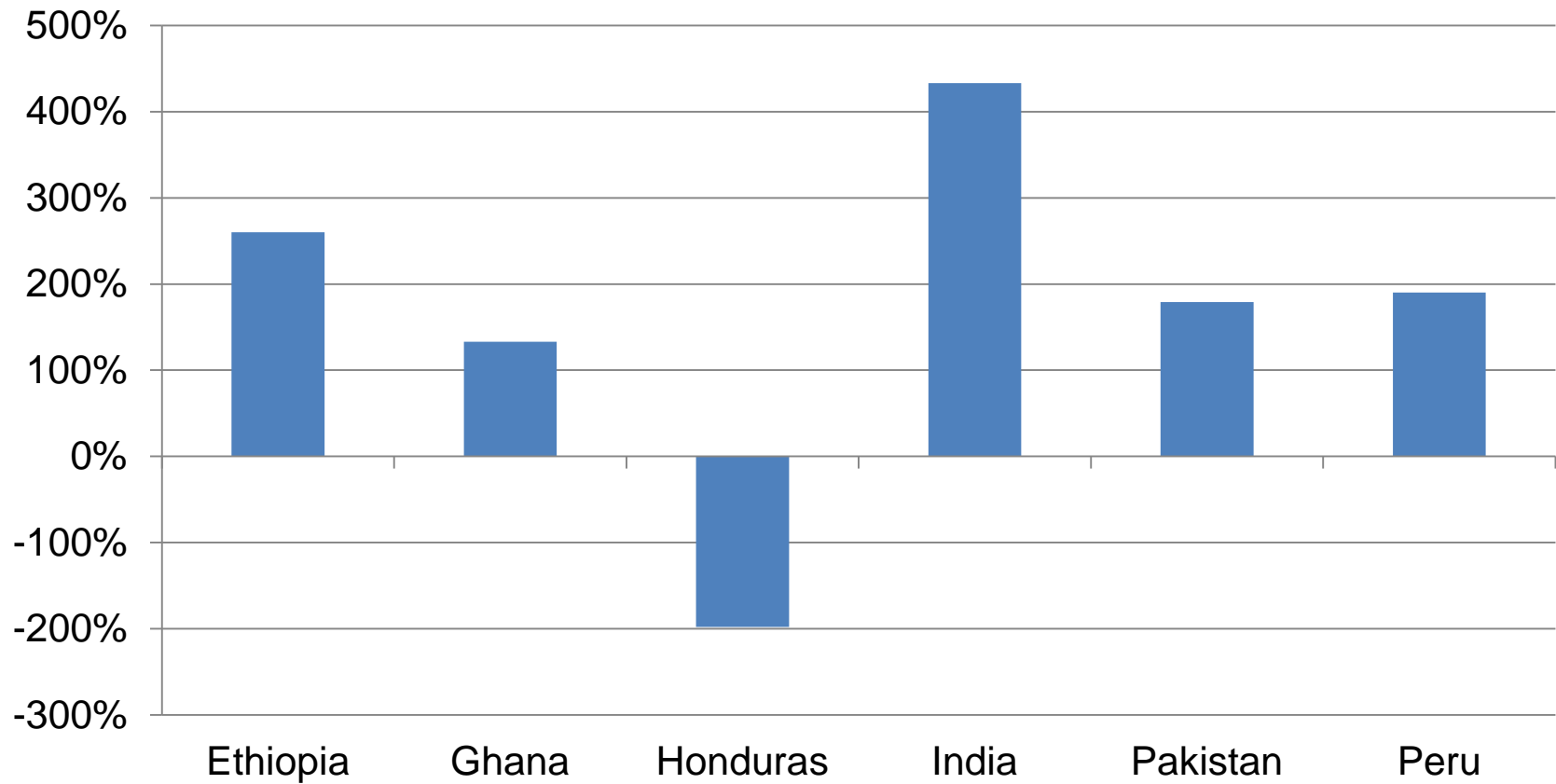


Quantiles: Income and Revenues



Cost Effective?

Total Benefits / Total Costs by Country



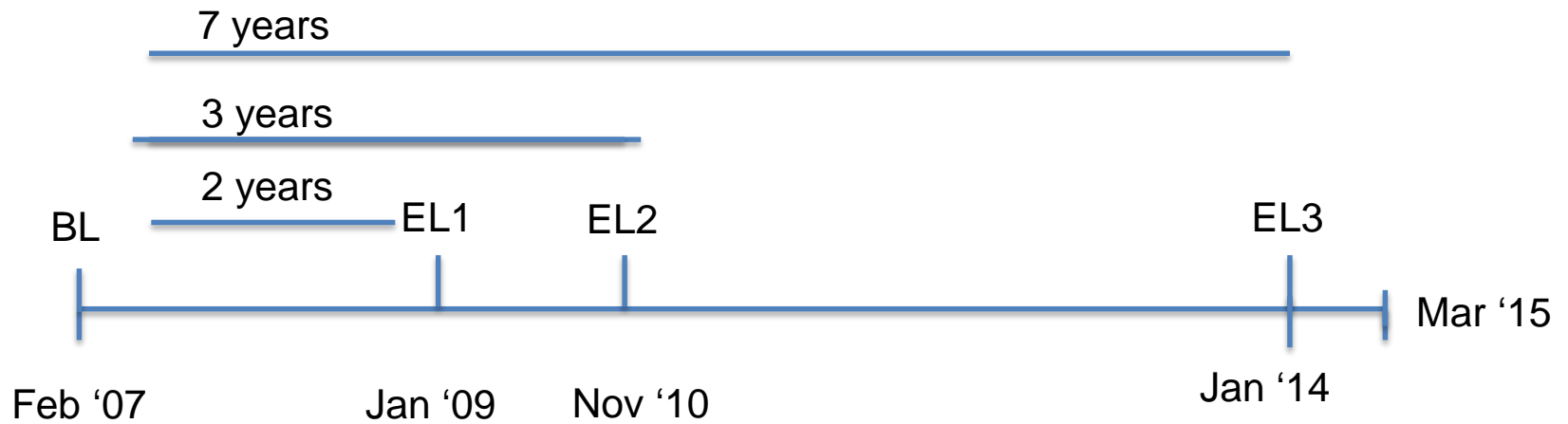
But does it work in the long term?



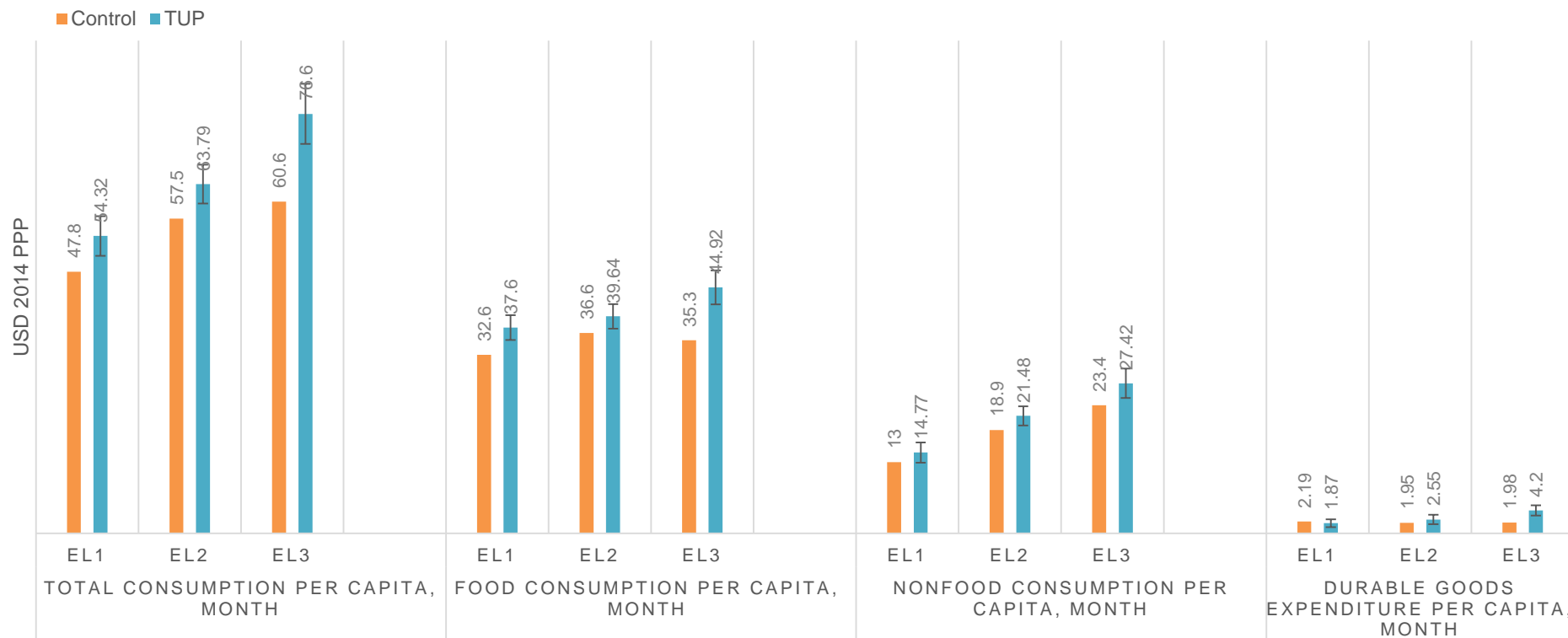
Comparison to BRAC results

Variable	Multi-Site Results (Three Years)	BRAC Results (Four Years)
Total consumption per capita, month	\$3.77 (control \$77)	\$4.31 (baseline \$51.16)
Food consumption per capita, month	\$3.02 (control \$46.40)	\$1.71 (baseline \$5.44)
Non-food consumption per capita, month	\$0.82 (control \$27.80)	\$2.60 (baseline \$45.72)
Household savings	\$78.80 (control \$92.60)	\$5.42 (baseline \$0.63)
Productive asset value	\$222 (control \$1880)	\$55.38 (livestock only) (baseline \$4.85)
Benefit/cost	166%	244%

Long-Term Impacts in West Bengal

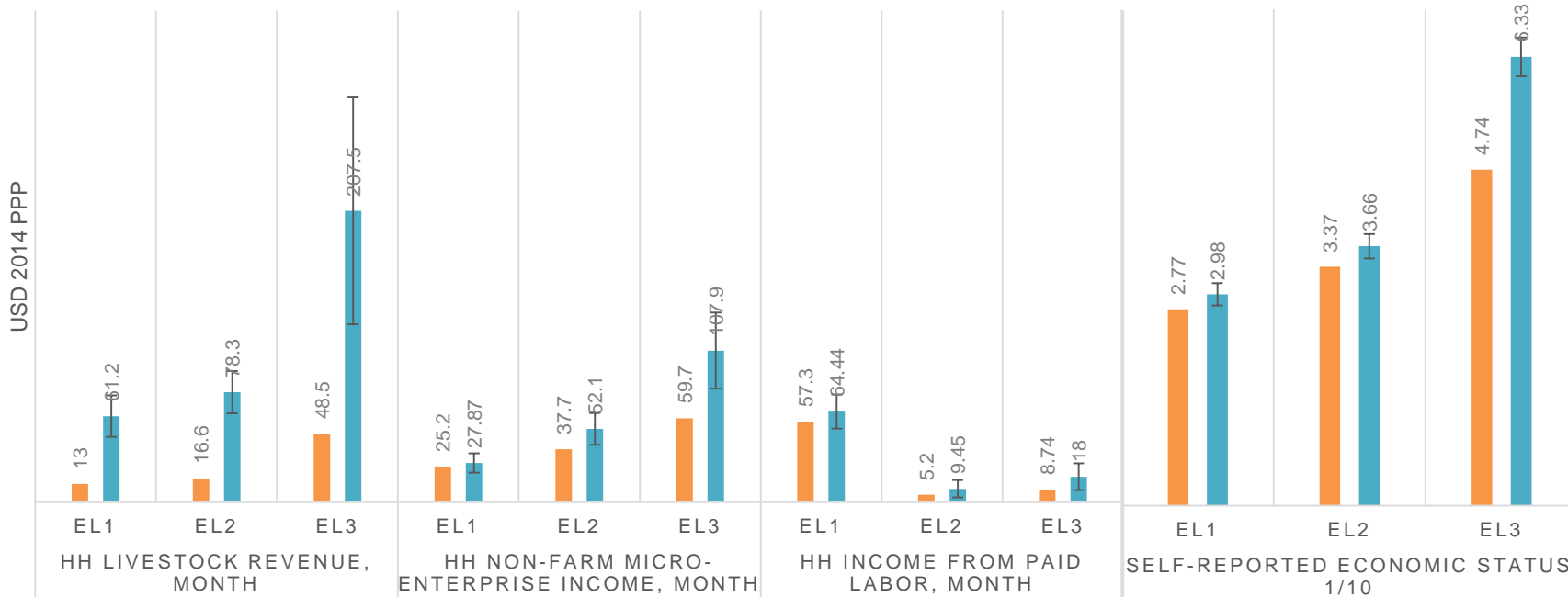


Long-Term Consumption



Long-Term Income & Revenues

Control TUP



In the News

“Much of the news about global poverty is depressing, but this is fabulous: a large-scale experiment showing, with rigorous evidence, what works to lift people out of the most extreme poverty.”

- **Nicholas Kristof**
The New York Times



ABDUL LATIF JAMEEL
Poverty Action Lab

TRANSLATING RESEARCH INTO ACTION

**Bloomberg
Businessweek**

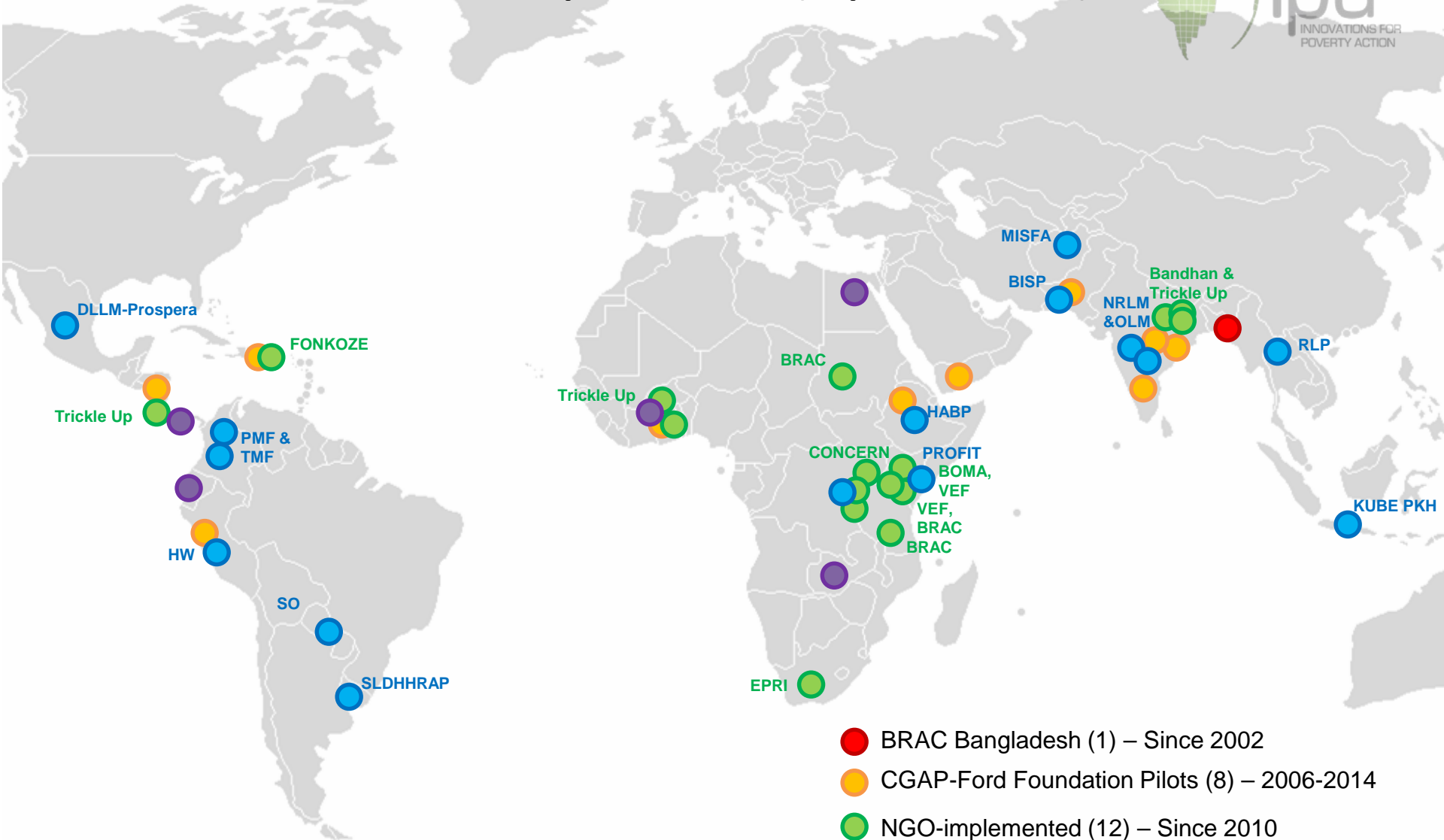
The New York Times

nature

n p r

Science
AAAS

New Graduation Adaptations (April 2016)



Source: CGAP

- BRAC Bangladesh (1) – Since 2002
- CGAP-Ford Foundation Pilots (8) – 2006-2014
- NGO-implemented (12) – Since 2010
- Donor-implemented [UNHCR] (5) – Since 2013
- Government-implemented (13) – Since 2013

Next Steps: Learning as we Scale

- Who benefits the most? What to do for those who benefit less?
- Do we need all the components?
- Can it be cheaper?
- Complementary inputs
- Community impacts?



Get in touch!



poverty-action.org/socialprotection

ngoldberg@poverty-action.org